



HERCULES LOADMASTER RANGE



POWERED BY
WEICHA



www.herculesloaders.com.au
Ph: 07 3807 4333



LOADMASTER

HLM70 **LOADMASTER**

Operating Weight
7300kg

Rated Load Capacity
2,000kg

Weichai Engine Power
70kw/95hp



HLM85 **LOADMASTER**

Operating Weight
8500kg

Rated Load Capacity
2,500kg

Weichai Engine Power
92kw/125hp





LOADMASTER

HLM105 **LOADMASTER**

Operating Weight
10,600kg

Rated Load Capacity
3,000kg

Weichai Engine Power
92kw/125hp



HLM125 **LOADMASTER**

Operating Weight
12,000kg

Rated Load Capacity
4,000kg

Weichai Engine Power
129kw/170hp





Operator Comfort



Control Transmission System

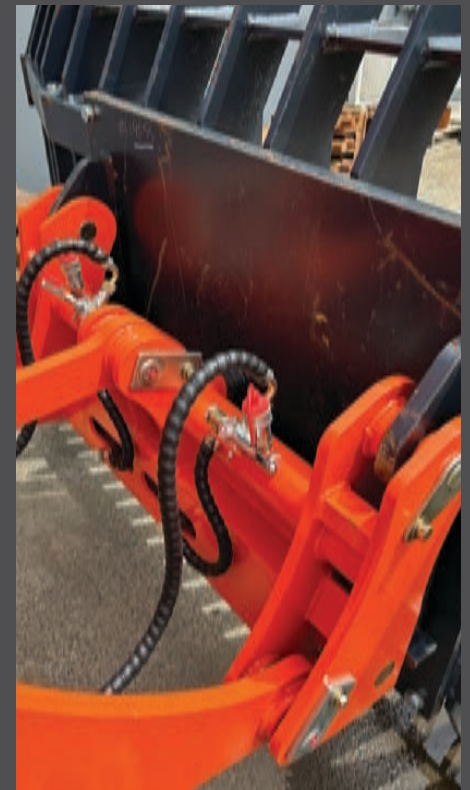
All Loadmaster models have a 2-speed high/low transmission, activated by 2 levers on the left side of the steering wheel for ergonomic operation.

More torque in low speed improves reaction and acceleration.

Modern Controls

All Hercules loaders have an instrumental dashboard and integrated switching with ergonomic joystick controls. Manual gear change varies amongst models. Full hydraulic load sensing steering delivers easy operation and more comfort with large bearing design in the articulation to improve load capacity.

Access and Maintenance



Parts & Service

Full dedicated Hercules parts division supports the maintenance of your loader, many of our loader parts can be dispatched within 24 hours. Our professional and highly trained service division is available for after sales support, we take a proactive approach towards customer service by continuously training our personnel on the loader technology.

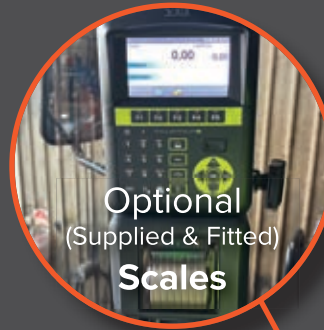
Warranty

Every Hercules *Loadmaster* series loader is covered by a 12 month / 2,000 hour (whichever comes first) parts and labour warranty.



Quality Features

- **Constant 4x4 Drive**
- **Quality Mechanical Suspension Seat**
- **Electronic Pilot Joystick Control**
- **Air Over Hydraulic Brakes**
- **Tow Point**



Optional
(Supplied & Fitted)
Scales



Optional
(Supplied & Fitted)
UHF Radio



Factory Standard
Rear End Chassis
Ripper-Ready



Optional
(Supplied & Fitted)
**Fuel & Hydraulic
Site Glass Guards**





- **Extra Large Luxury Cabin**

- **Operator Comfort**

The wrist, arm rest and right-hand side console are ergonomically positioned for the operator

- **Optimum 360° Visibility**

A windshield without pillars enhances visibility levels from the operator seat

- **Reverse Camera**

Extra large - colour

- **Air Conditioning**

High flow designed for Australian Standards

- **Ease of Accessibility**

Daily checks can be made from the ground level, making life easier on the job site and allowing you to work productively:

- engine cover
- radiator openings
- grease points
- oil levels
- fuel filters





HLM70

LOADMASTER

Operating Weight
7300kg

Rated Load Capacity
2000kg

Weichai Engine Power
75kw/100hp

SPECIFICATION

| | |
|---------------------------|------------------|
| Overall weight(kg) | 7300 |
| L×W×H (mm) | 6600 x 2270x2900 |
| Rated bucket capacity(m3) | 1.4-1.8 |
| Rated load(kg) | 2000 |
| Maximum dump height (mm) | 3600 |
| Bucket indicator | Yes |

ENGINE

| | |
|-------|------------------------------|
| Model | Weichai WP4G95E221 |
| Type | Vertical Inline Diesel Turbo |

| | |
|--------------------|---------------|
| Rated power | 70 kw / 95 HP |
| Rated speed(r/min) | 2400 |

TRANSMISSION SYSTEM

| | |
|--------------|---------------------------|
| Model | Kinlite Mechanical |
| Gearbox type | Mechanical High/Low Shift |
| Gear shift | 2 Forward, 2 Reverse |

MAIN HYDRAULIC SYSTEM

| | |
|-------------------|--------|
| Working pressure | 16MPA |
| Boom lifting time | 3.8sec |

STEERING SYSTEM

| | |
|------------------------|-----------------------|
| Type | Articulated hydraulic |
| Min turning radius(mm) | 5200 |

TYRES

| | |
|----------------|----------|
| Standard tyres | 16/70-24 |
|----------------|----------|

STANDARD BUCKET

| | |
|------------|------|
| Width (mm) | 2270 |
|------------|------|

Fluid capacity

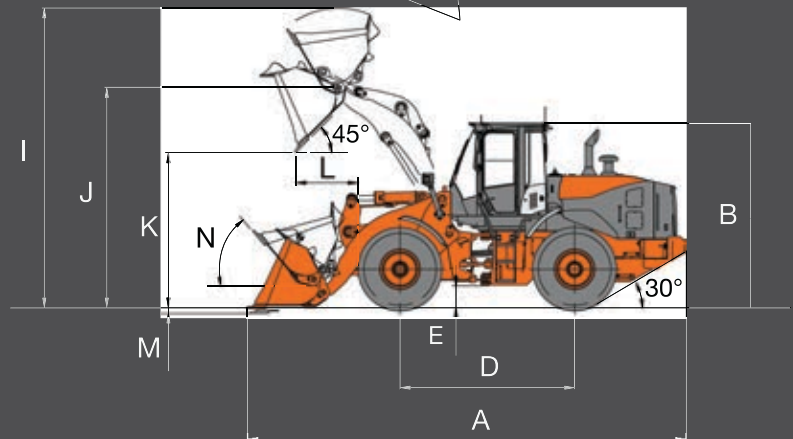
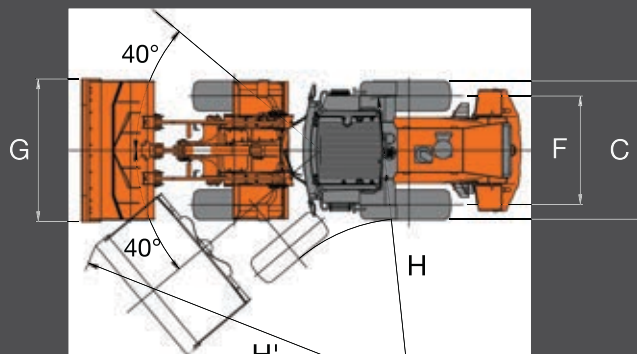
| | |
|-----------|-----------|
| Fuel | 100 Litre |
| Hydraulic | 75 Litre |

SERVICE REFILL CAPABILITIES

| | |
|---------------------------|----------|
| Fuel tank | 75 Litre |
| Engine oil | 9 Litre |
| Hydraulic oil | 50 Litre |
| Front / Rear Differential | 6 Litre |
| Torque/Transmission | 20 Litre |
| Engine coolant | 18 Litre |

SPEED

| | |
|----------|---------|
| 1st gear | 8 km/hr |
| 2nd gear | 18km/hr |



| | mm | mm | mm |
|----|--|------|----|
| D | Wheel base | 2690 | |
| E | Ground Clearance | 420 | |
| F | Counter weight | 1820 | |
| G | Bucket Width | 2270 | |
| H | Turret Diameter (without tyre) | 4300 | |
| H' | Load Carry position | 5200 | |
| I | Over height at full reach | 5015 | |
| J | Height at full reach | 4130 | |
| K | Dumping height | 3600 | |
| L | Reach, 45 degree dump, full height | 900 | |
| M | Digging depth (horizontal digging angle) | 40 | |
| N | Max, roll back at carry position | 52.5 | |



HLM85 LOADMASTER



Operating Weight
8500kg

Rated Load Capacity
2500kg

Weichai Engine Power
92kw/125hp

SPECIFICATION

| | |
|---------------------------|--------------------|
| Overall weight(kg) | 8500 |
| L×W×H (mm) | 6850 x 2400 x 3000 |
| Rated bucket capacity(m3) | 1.6-2.3 |
| Rated load(kg) | 2500 |
| Maximum dump height (mm) | 3600 |
| Bucket indicator | Yes |

ENGINE

| | |
|--------------------|-------------------------------|
| Model | Weichai WP6G125E22 |
| Type | Vertical Inline, Turbo Diesel |
| Rated power | 92kw / 125HP |
| Rated speed(r/min) | 2200 |

TRANSMISSION SYSTEM

| | |
|--------------|---------------------------|
| Model | Kinlite Mechanical |
| Gearbox type | Mechanical High/Low Shift |
| Gear shift | 2 Forward, 2 Reverse |

MAIN HYDRAULIC SYSTEM

| | |
|-------------------|-------|
| Working pressure | 16MPa |
| Boom lifting time | 4sec |

STEERING SYSTEM

| | |
|------------------------|-----------------------|
| Type | Articulated hydraulic |
| Min turning radius(mm) | 5200 |

TYRES

| | |
|----------------|---------|
| Standard tyres | 17.5-25 |
|----------------|---------|

STANDARD BUCKET

| | |
|------------|------|
| Width (mm) | 2400 |
|------------|------|

FLUID CAPACITY

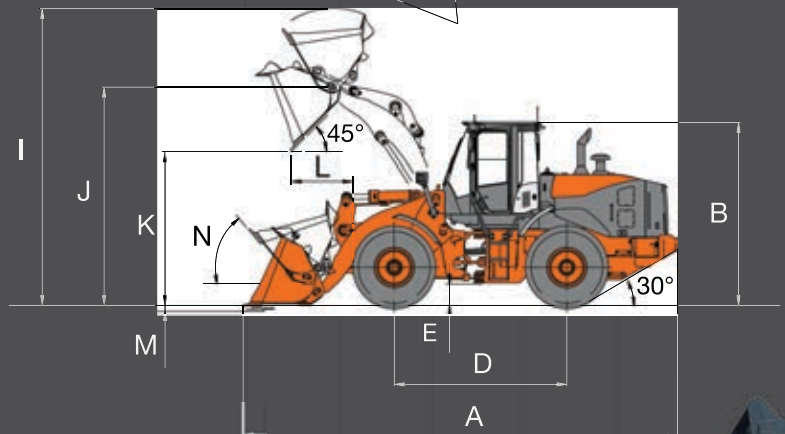
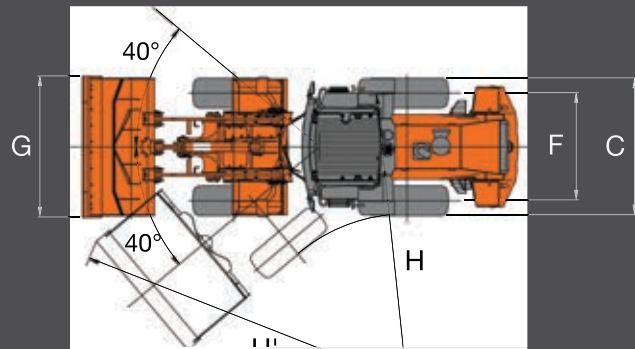
| | |
|-----------|-----------|
| Fuel | 120 Litre |
| Hydraulic | 90 Litre |

SERVICE REFILL CAPABILITIES

| | |
|---------------------------|-----------|
| Fuel tank | 100 Litre |
| Engine oil | 12 Litre |
| Hydraulic oil | 60 Litre |
| Front / Rear Differential | 11 Litre |
| Torque/Transmission | 20 Litre |
| Engine coolant | 22 Litre |

SPEED

| | |
|----------|----------|
| 1st gear | 10 km/hr |
| 2nd gear | 20km/hr |



| | | |
|----|--|------|
| A | Overall | 6900 |
| B | Overall Height | 3000 |
| C | Width over tires | 2200 |
| D | Wheel base | 2710 |
| E | Ground Clearance | 470 |
| F | Counter weight | 1820 |
| G | Bucket Width | 2370 |
| H | Turning Radius (centreline of outside tire) | 4650 |
| H' | Loader clearance radius, bucket in carry position | 5600 |
| I | Overall operating height with bucket at full reach | 4965 |
| J | Height to bucket hinge pin, fully raised | 4200 |
| K | Dumping clearance 45 degree, full height | 3550 |
| L | Reach, 45 degree dump, full height | 900 |
| M | Digging depth (horizontal digging angle) | 40 |
| N | Max, roll back at carry position | 52.5 |





www.herculesloaders.com.au | Ph: 07 3807 4333

HLM105

LOADMASTER

Operating Weight
10,600kg

Rated Load Capacity
3000kg

Weichai Engine Power
92kw/125hp

SPECIFICATION

| | |
|--|----------------|
| Overall weight(kg) | 10600 |
| L×W×H (mm) | 7750×2540×3120 |
| Rated bucket capacity(m ³) | 1.8 |
| Rated load(kg) | 3000 |
| Maximum dump height (mm) | 3200 |
| Bucket indicator | Yes |
| Max. breakout force(KN) | 138 |

ENGINE

| | |
|-----------------------|-------------------------------------|
| Model | Weichai WPG125E23 |
| Type | In line, liquid cooled Diesel Turbo |
| Rated power (kw) (HP) | 92kw / 125HP |
| Rated speed(r/min) | 2300 |

TRANSMISSION SYSTEM

| | |
|---------------|----------------------|
| Model | BEILIAN Transmission |
| Gearbox AType | Mechanical High/Low |
| Gear Shift | 2 Forward, 2 Reverse |

HYDRAULIC SYSTEM

| | |
|----------------------------|----------------------------------|
| Distribution of work valve | DF25.3 |
| Working pump | VHP2100/1010-xfl, CBGJ1032L,FC50 |

STEERING SYSTEM

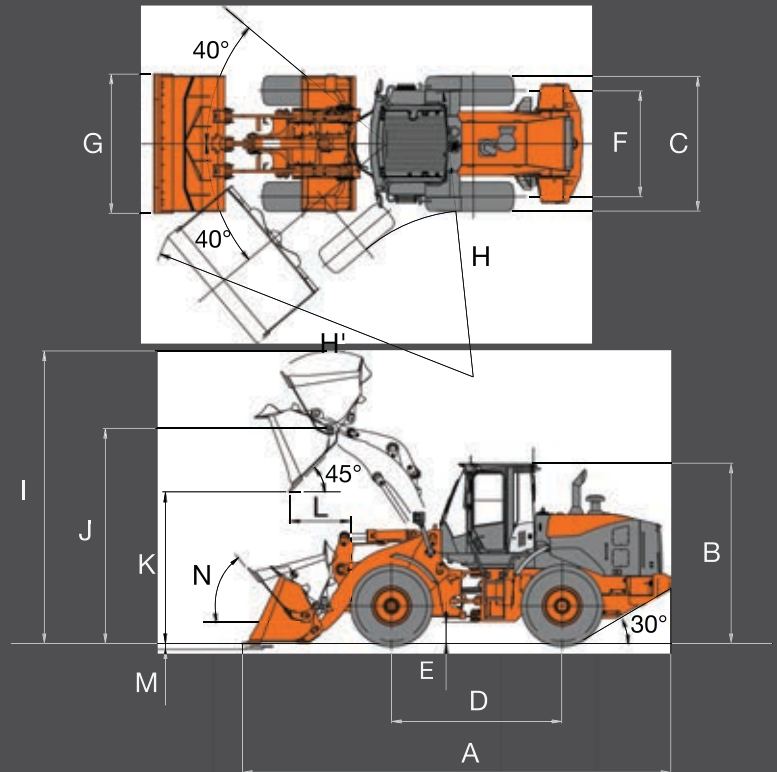
| | |
|------------------------|--|
| Type | Articulated and hydraulic lift and right 36.5±1° |
| Max. turning angle | 5862 |
| Min turning radius(mm) | |

BRAKE SYSTEM

| | |
|------------|-----------------|
| Brake type | Air-break brake |
|------------|-----------------|

TYRES

| | |
|----------------|---------|
| Standard tires | 17.5-25 |
|----------------|---------|



| | | |
|----|---|------|
| A | Overall Length mm | 7600 |
| B | Overall Height mm | 3180 |
| C | Width over tires mm | 2250 |
| D | Wheel base mm | 2850 |
| E | Ground Clearance mm | 375 |
| F | Counter weight mm | 2000 |
| G | Bucket Width mm | 2540 |
| H | Turning Radius (centreline of outside tire) mm | 5420 |
| H' | Loader clearance radius, bucket in carry position mm | 5980 |
| I | Overall operating height with bucket at full reach mm | 5100 |
| J | Height to bucket hinge pin, fully raised mm | 4060 |
| K | Dumping clearance 45 degree, full height mm | 3200 |
| L | Reach, 45 degree dump, full height mm | 1200 |
| M | Digging depth (horizontal digging angle) mm | 130 |
| N | Max. roll back at carry position deg | 48.5 |



HLM125 LOADMASTER



Operating Weight
12,000kg

Rated Load Capacity
4000kg

Weichai Engine Power
129kw/170hp

SPECIFICATIONS

| | |
|----------------------------|----------------|
| Overall Weight | 12000kg |
| LxWxH (mm) | 7680x2540x3260 |
| Rated Bucket capacity (m3) | 2.0-3.5 |
| Rated Load (kg) | 4000 |
| Max. Dump Height (mm) | 3800 |
| Bucket Indicator | Yes |

ENGINE

| | |
|---------------------|--|
| Model | Weichai WP6G175E22 |
| Type | Vertical Inline, Turbo Water Cooled, Diesel |
| Rated Power (kw) | 134kw / 180hp |
| Rated Speed (r/min) | 2400 |

TRANSMISSION SYSTEM

| | |
|---------------|---------------------------|
| Model | BEILIAN Transmission |
| Gearbox AType | Mechanical High/Low Shift |
| Gear Shift | 2 Forward, 2 Reverse |

MAIN HYDRAULIC SYSTEM

| | |
|-------------------|----------------|
| Working Pressure | 18mpa (180bar) |
| Boom Lifting Time | 4.8sec |

STEERING SYSTEM

| | |
|----------------------|------------------------------------|
| Type | Load Sensing Hydraulic Steering |
| Min Turn Radius (mm) | 6000 |

TYRES

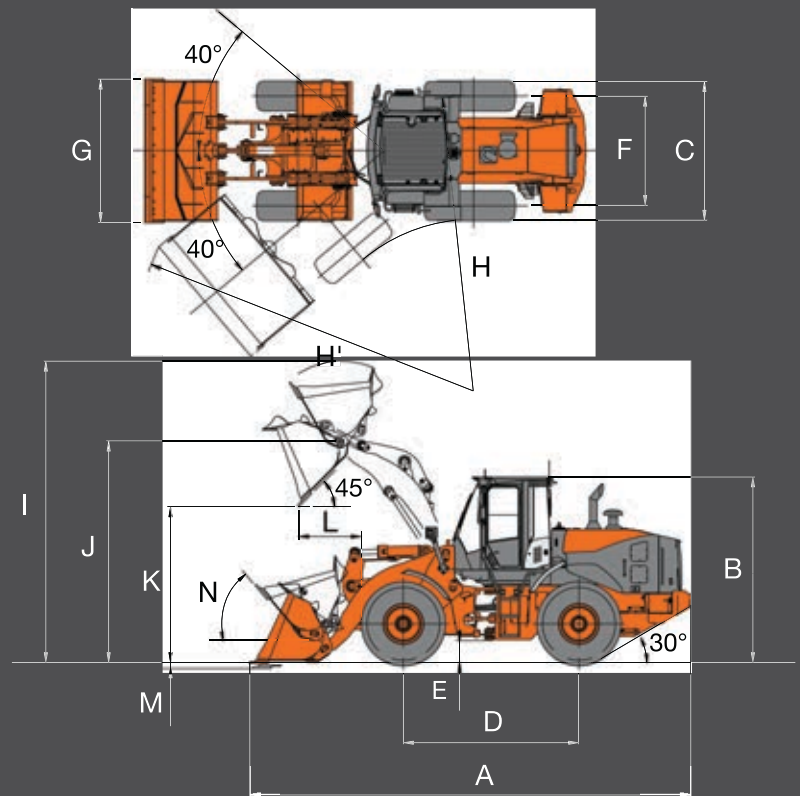
| | |
|----------------|---------|
| Standard Tyres | 20.5-25 |
|----------------|---------|

STANDARD BUCKET

| | |
|------------|------|
| Width (mm) | 2480 |
|------------|------|

FLUID CAPACITY

| | |
|------------|-----------|
| Fuel | |
| Hydraulics | 170 Litre |



| | | | |
|----|--|-----|------|
| A | Overall | mm | |
| B | Overall Height | mm | 3260 |
| C | Width over tires | mm | 2310 |
| D | Wheel base | mm | 2850 |
| E | Ground Clearance | mm | 445 |
| F | Counter weight | mm | 2000 |
| G | Bucket Width | mm | 2540 |
| H | Turning Radius (centreline of outside tire) | mm | 5420 |
| H' | Loader clearance radius, bucket in carry position | mm | 6020 |
| I | Overall operating height with bucket at full reach | mm | 5220 |
| J | Height to bucket hinge pin, fully raised | mm | 4130 |
| K | Dumping clearance 45 degree, full height | mm | 3270 |
| L | Reach, 45 degree dump, full height | mm | 1200 |
| M | Digging depth (horizontal digging angle) | mm | 130 |
| N | Max. roll back at carry position | deg | 48.5 |





www.herculesloaders.com.au | Ph: 07 3807 4333

Strength and Reliability



Designed with operators and owners in mind

Our new Hercules Loadmaster loaders have been designed and built for budget-minded customers requiring low-hour environments. Retaining the well-known quality of other Hercules builds, the Loadmasters offer a variation in transmission and engine types.

Service Department



Service and customer backup support 24/7

A comprehensive range of spare parts to ensure optimum service.



Accessories

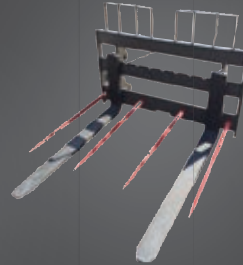
Post Rammers
to suit all loaders



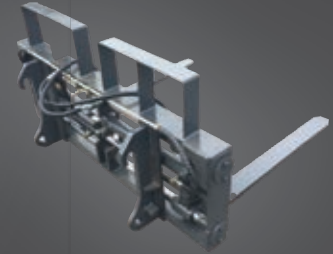
Hay Forks



Pallet Forks / Hay Spikes
Combo



Hydraulic Forks



Hydraulic Log Grab



Hydraulic Pipe Grabs



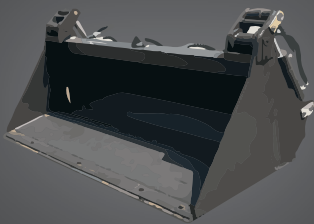
Rippers



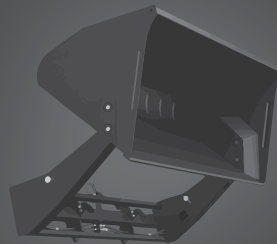
Hydraulic Crane Jib



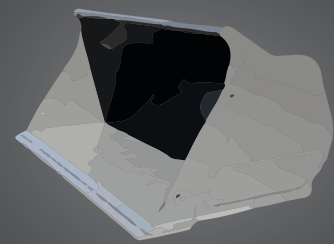
Hydraulic 4in1 Bucket
with bolt on edges



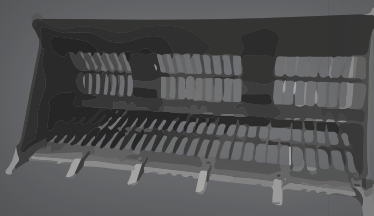
Hydraulic High Tip Bucket



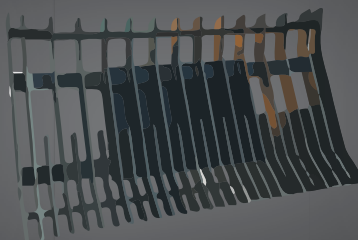
Grain/Light Material Bucket



Rock Bucket



Reversible Skeleton
Stick Rake 2.5m to 4.5m



Bladed Stick Rake from 4.2m





www.herculesloaders.com.au | Ph: 07 3807 4333